

4

3

2

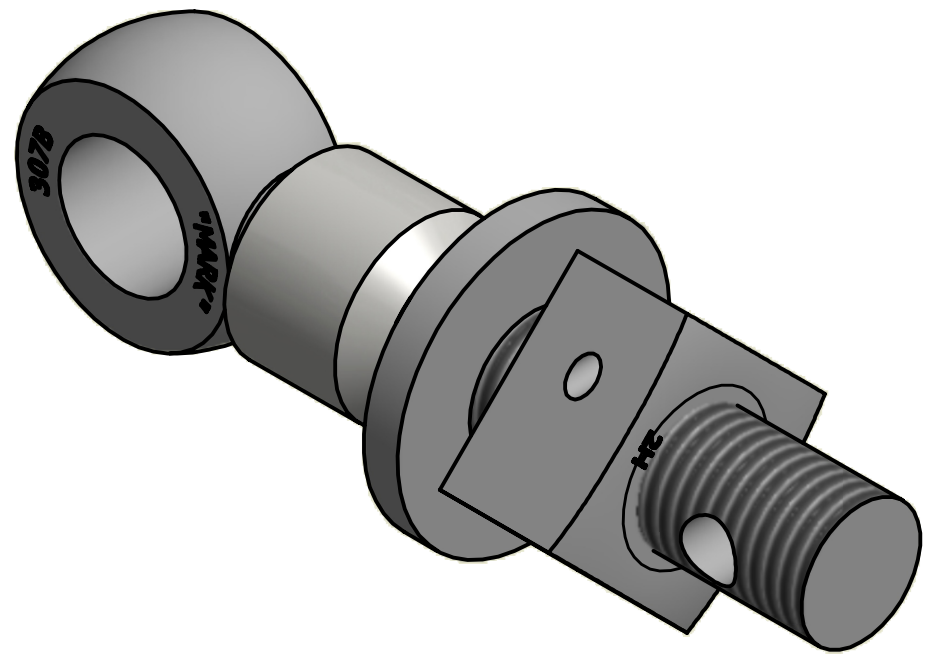
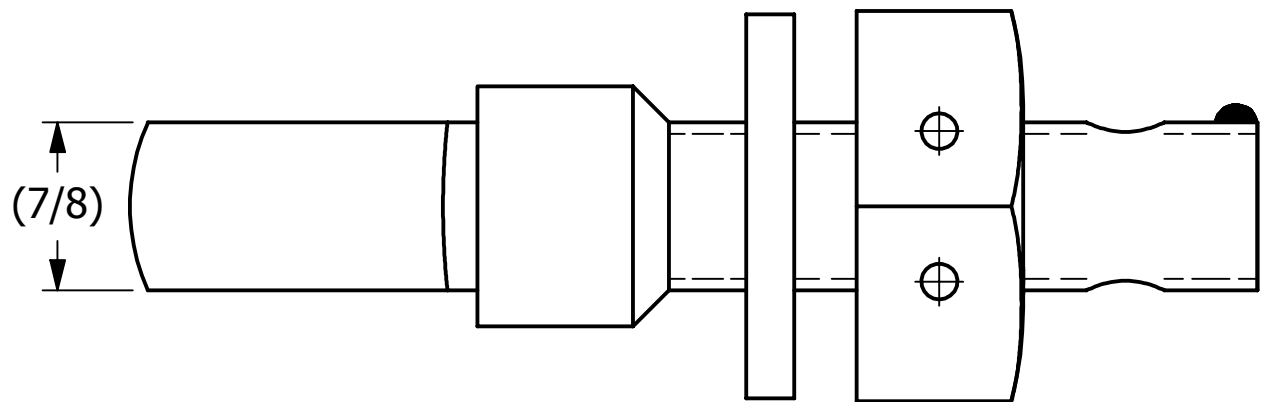
1

B

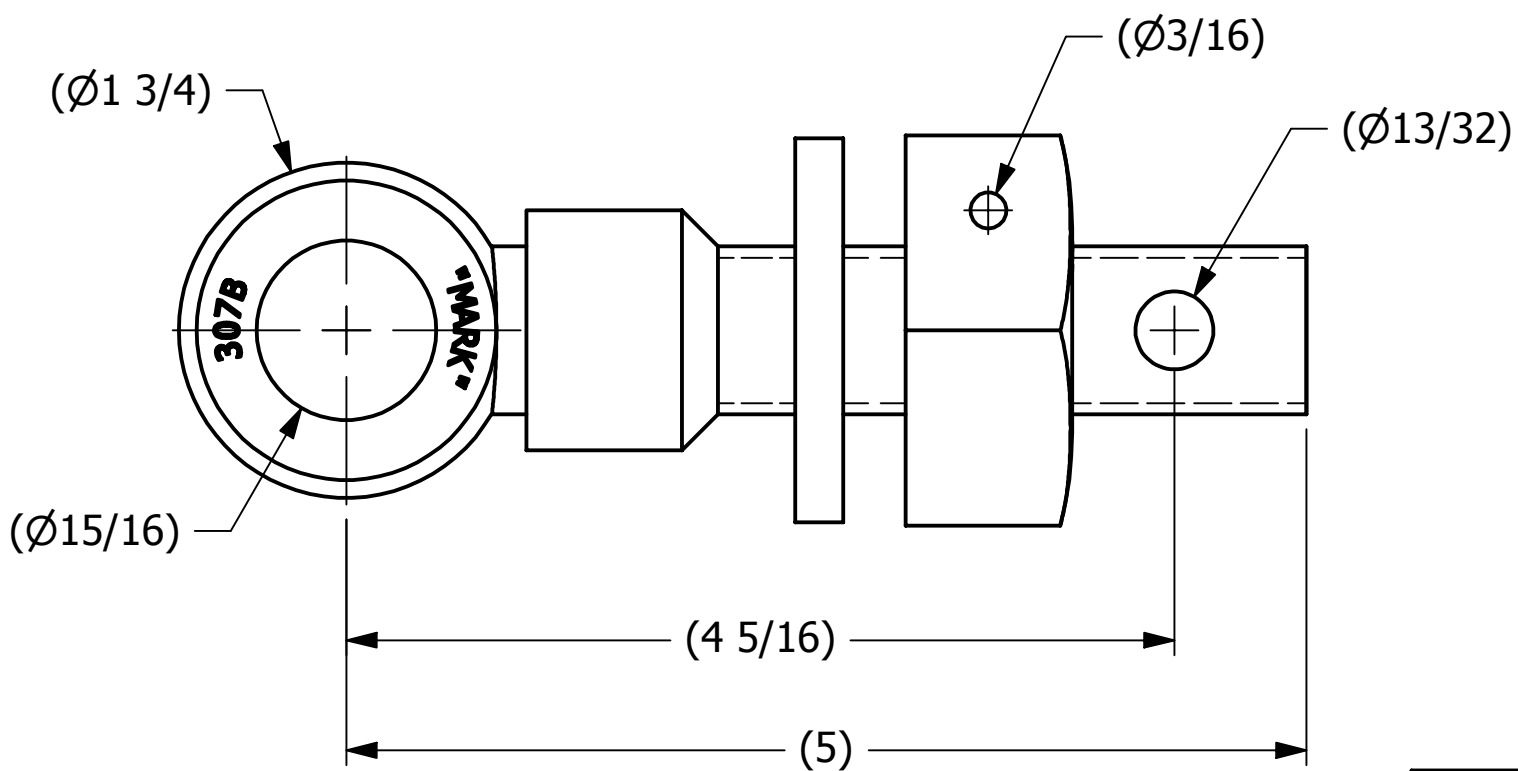
B

SALES DRAWING

SALES DRAWING



ISOMETRIC VIEW



NOTE:
 JET LUBE(PFPE GREASE) APPLIED TO WORKING THREAD AREA,
 THE BOTTOM FACE OF THE NUT, AND THE TOP FACE OF THE
 WASHER.

A	WEB	9-25-13	RELEASED FOR PRODUCTION
REV	BY	DATE	DESCRIPTION

UNLESS OTHERWISE SPECIFIED DIMENSIONAL TOLERANCES		DRAWN BY:	WEB
FRACTIONAL:	±1/16	CHECKED BY:	CHL
X.XX:	±.03	PROTOTYPE BY:	WEB
X.XXX:	±.015	PROTOTYPE DATE:	9/24/2013
ANGULAR:	±1°	APPROVED FOR PRODUCTION BY:	CHL
THIS PRINT, PROPERTY OF SALCO PRODUCTS INC., CONTAINS PROPRIETARY INFORMATION AND MUST NOT BE COPIED, REPRODUCED, OR USED DETRIMENTALLY TO OUR INTEREST.		PRODUCTION DATE:	9/25/2013
THIRD ANGLE PROJECTION			

PART NAME: EYEBOLT ASSEMBLY 7/8"X5"		
MATERIAL: CARBON STEEL		
PROJECT #:	130923FR2	SHEET #:
		1 OF 1
SCALE: 1:1		
DRAWING #:	B37304	PART #:
		EB785HHFTATC3L

4

3

2

1

A

A

